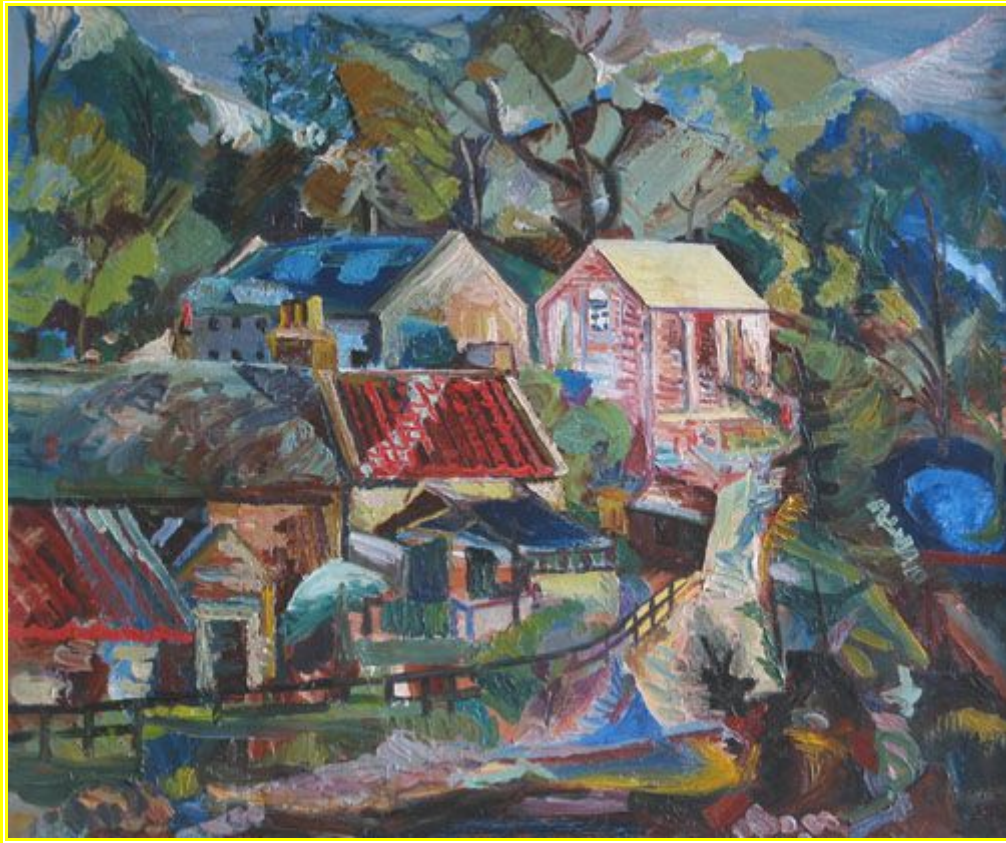
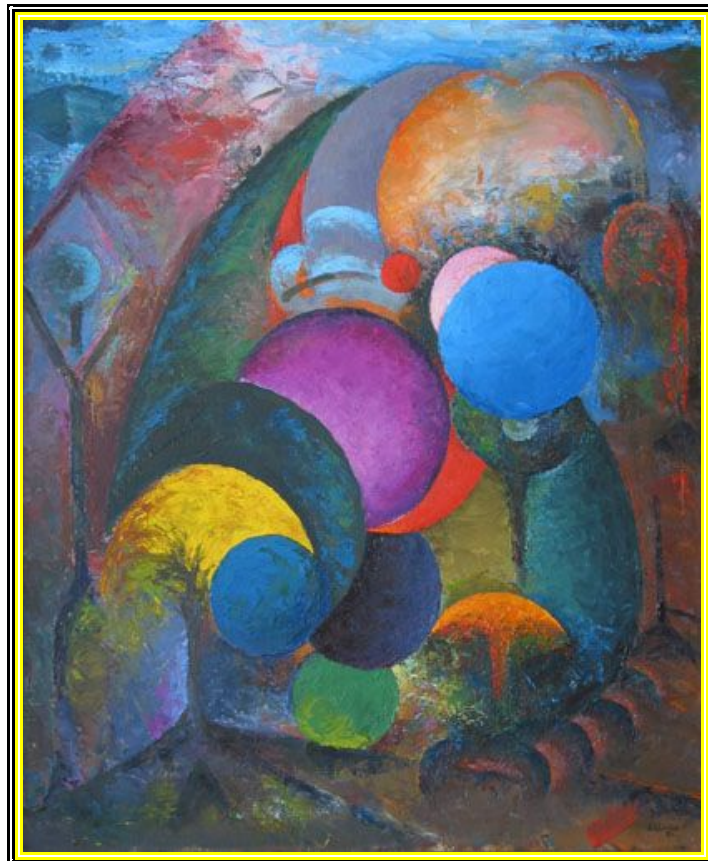


Redhall Mill, 1947, oil on canvas, 60cm x 50cm



Edwin G Lucas (1911-1990)

A RETROSPECTIVE EXHIBITION OF PAINTINGS



Eclipse, 1984, oil on canvas, 50cm x 60cm

This is a unique opportunity to see the work of a little-known artist who was arguably a decade ahead of his time during his prime from the 1930s to the 1950s. Most of the paintings on exhibit have not been seen publicly for nearly 60 years.

Edwin G Lucas explored many different styles during his career. One rich source of inspiration was the landscape of Scotland and particularly his native Edinburgh. When living in Juniper Green he made many captivating paintings of the Water of Leith and the Pentlands, ranging from delicate watercolours to richly impressionistic oils.

He flirted with Surrealism in the late 1930s and early 1940s, but otherwise was strongly opposed to being regarded as a representative of any particular movement. For him the purpose of art was the enlargement of experience and that meant continual innovation. Strong elements of imagination and abstraction are evident in many of his paintings from the 1940s onwards.

Edwin's work was regularly accepted for the RSW, SSA and RSA exhibitions. However a conservative selection policy on the part of these societies, together with the absence of the independent galleries we are used to today, meant there were few opportunities to show his most innovative work. This exhibition provides a rare opportunity to be one of the first people to rediscover an under-rated artist.



Still Life, Grecian Urn, 1949
oil on canvas, 90cm x 70cm

HANOVER • FINE • ARTS

22A DUNDAS STREET : EDINBURGH EH3 6JN

TELEPHONE / FAX : 0131 556 2181

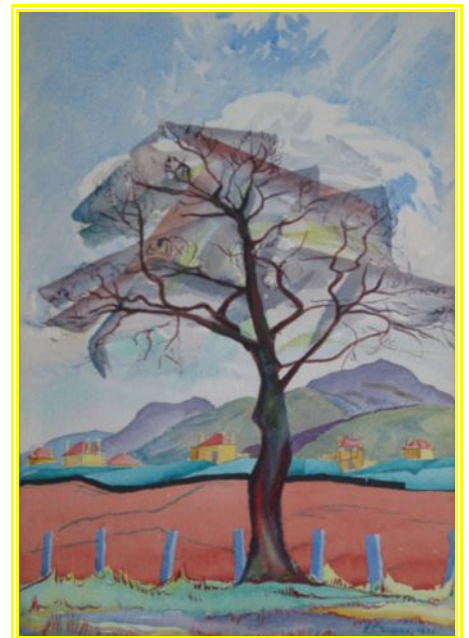
AN EXHIBITION OF PAINTINGS BY **Edwin G Lucas (1911-1990)**

Exhibition runs from
Tuesday 7th April until Saturday 25th April



Falls of Muick, Ballater, 1947, Wax & Watercolour on Paper, 27cm x 38cm

Winter Tree, Baberton Mains, 1938, Watercolour on Paper, 26cm x 38cm



www.hanoverfinearts.co.uk . hanoverfinarts@tiscali.co.uk

Gallery Hours: Tuesday to Friday 11.00am - 5.30pm ; Saturday 11.00am - 5.00pm



Dean Bridge, Edinburgh, 1981,
oil on paper mounted on board, 30cm x 24cm

City Bridges, 1951,
oil on canvas, 60cm x 50cm



Taboo, 1951,
oil on board, 76cm x 64cm